

How to choose the table

A solid wood top is actually the most practical choice because if it gets damaged, it can be sanded and refinished. Or perhaps you like the battered look? Therefore a few knocks and scratches will add charm and character. Many tables are made from a combination of materials, such as solid wood and veneers. If a veneered top gets chipped or damaged revealing the surface beneath, you can't easily repair it.

What finish?

French polish gives a table a classic gleam but it's not as good at taking knocks with dropped knives and forks. Plus, repairs will be expensive. For busy households, a lacquered finish is best and just needs a light dusting with a soft cloth. However, if the finish gets damaged, you can't repair it yourself. Wax and oil finishes, although less resistant to marking, have the advantage that you can re-wax them from time to time, filling in minor scratches.

How to choose the chairs

Upholstered chairs are most comfortable and practical as they can be washed or recovered with new fabric when you fancy a change of colour scheme. Wood and leather all have the advantage over fabric, in that they can easily be wiped clean. A hardwood frame and legs are the most long-lasting, but softwoods are often used for carved designs.

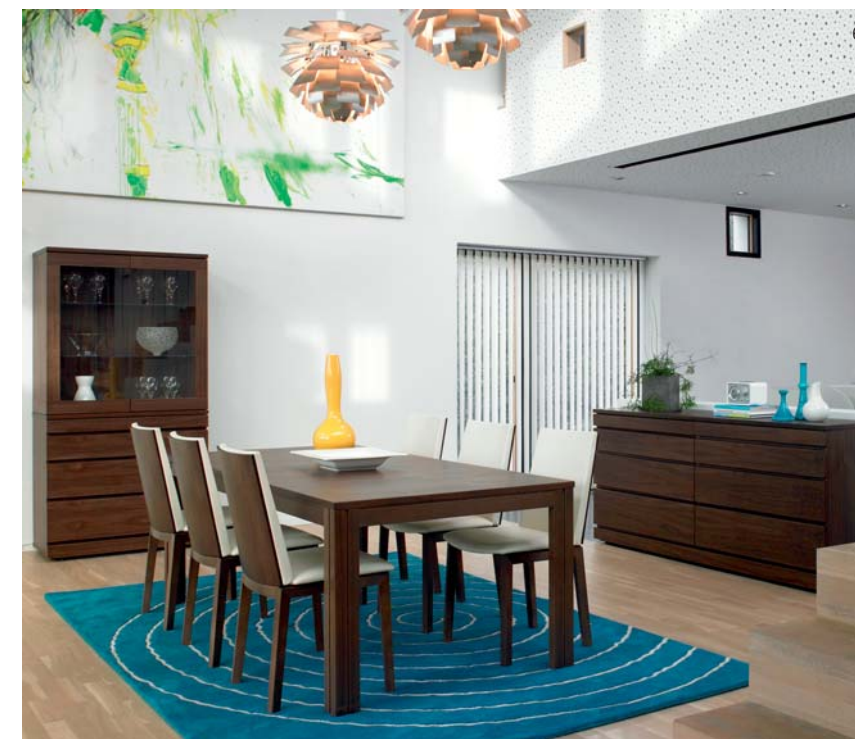


Expert Advice

Joe Norney, Neptune Sales Manager, Ireland:

'A dining area in the home shouldn't just be somewhere to sit and eat. As our homes are becoming more influenced by commercial décor from places like shops, hotels and restaurants it stands to reason that homeowners are now considering more than a new table and chairs when they are improving their dining space. Ensuring you achieve a comfortable, practical and sociable dining space is about much more besides. Dining sets are the focal point of the room, and can provide the WOW factor whether you have plenty of space or are limited. At Neptune we have a variety of dining tables, all with solid oak tops that can accommodate from four people in the corner of the kitchen, right up to 16 for the grandest of dinner parties. All tables have been treated with our isogaurd treatment oil for a robust yet beautiful finish. They also look great with any of our dining chairs which offer the best in comfort, from our stylish Lloyd loom to our practical oak and all the upholstered selection in between.

Sideboards, dressers, mirrors and lamps can all add to the overall look of the room and help achieve a casual and comfortable ambience. Neptune's freestanding interior pieces are designed to complement the dining furniture. As in many rooms in the house, symmetry is important in the dining room, and pairs of furniture look great. To finish the overall look, consideration should also be given to the wall colour, at Neptune we have developed a palette of 20 paint colours which can be used on furniture and walls, all 20 colours have been designed to work together so that the hand-made painted and oak furniture can harmonise contentedly with the walls, skirting and doors, to create a beautiful look that can easily be refreshed should the mood take you.'



1 Beauty and clean lines with this collection from **Robinson Interiors**. Prices on request. **2** Gher from **Arper** is a system of essential and light tables, whose hardwood legs provide a warm and natural feel. The structure, available in four different wood finishes, attaches directly to the top, which is available in an array of measures and formats. Price on request. **3** A sumptuous Calligaris suite from **Uno Modern Living**. Price on request. **4** Ella chair from **Zanotta**. Polished or painted aluminium alloy legs in the shade of black or white. Body made of graduated flame-retardant polyurethane foam with steel insert and elastic strips suspension. Removable fabric or leather cover. Price on request. **5** Stunning bespoke Staron table available from **Beechview Interiors**. Price on request. **6** Beautifully engineered walnut extending table with matching chairs is available in different wood finishes and a choice of fabrics or leather for the chairs. Matching sideboard, wall unit and other occasional items of furniture are also available. All from **Elite Lighting**. Price on request. **7** Sheldrake table and Havana chairs from **Neptune**. Celebrating the beauty of ancient oak by reclaiming pieces that show the life of the original tree. Each piece is taken through a careful finishing process to show off its age and peculiarities before being sealed with Neptune isogaurd for the utmost protection. Available in a variety of configurations including the 165-365cm version shown here which can seat up to 16 people, these tables are ready to party! Price £1,250/€1,625 for table and £200/€260 each for Havana chairs.

Traditional Styles

Timeless and classic, the traditional kitchen design has grown in popularity in recent years. A touch of contemporary design can be added with appliances and worktops.

1 With an increasing trend for warmer earthier colours becoming apparent, the warm Vanilla in this Bella Newport kitchen from **BA Components** ticks all the right boxes. Designer, Kieran McCracken has created this traditional look simply but effectively with the inclusion of a simple over-mantle and plate rack alongside the use of wooden knobs and worktops for added warmth. The Belfast sink adds a clear hint of the timeless classic. **2** Stunning kitchen featured by **Beechview Interiors**. This handpainted Neptune in-frame kitchen features a bespoke mantle, windowseat and breakfast bar area. **3** The Henley kitchen from **Neptune**, built from solid oak chosen for its inherent strength and beautiful character ensures these cabinets are built to last a lifetime. Protected to give a timeless look, the Henley kitchen will look crisp and timeless year after year. Pictured here with Suffolk oak bar stools also available from Neptune.



4 This stunning piece is from the Flamont Collection on view at **Newcastle Design**. A summer sale of 15 per cent applies to this collection. **5** A very individual, free standing stove setting in Cherrywood, with a rich dark Mulberry tone, set on a natural dark limestone floor. Designed and supplied by **Wilsons Conservation Building Products**. **6** **Clive Christian's** stunning Victorian cream kitchen with ornate architectural detail, finished in classic cream with antique glaze. Complemented by the addition of Clive Christian's signature chandeliers and Victorian armchairs with scroll arms, the Victorian style kitchen captures a true French country style. Each piece of Clive Christian furniture is crafted and upholstered from the finest woods and fabrics by their specialists. The furniture is hand-painted and designed to complement their fitted designs.

